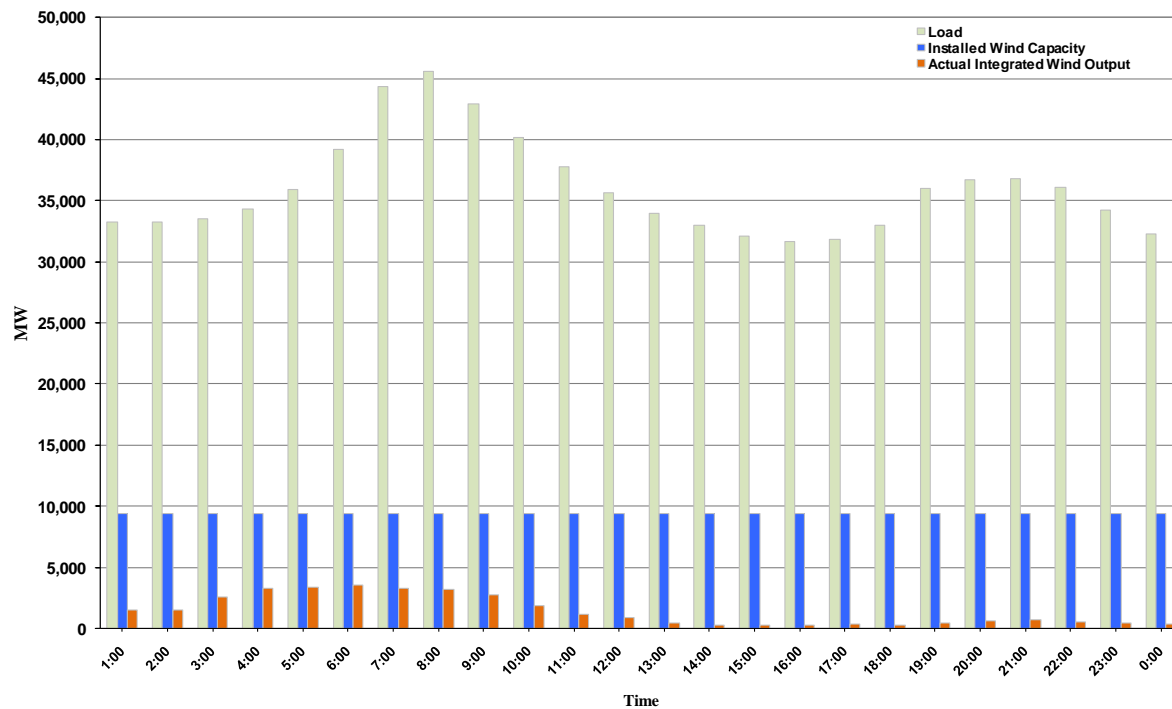




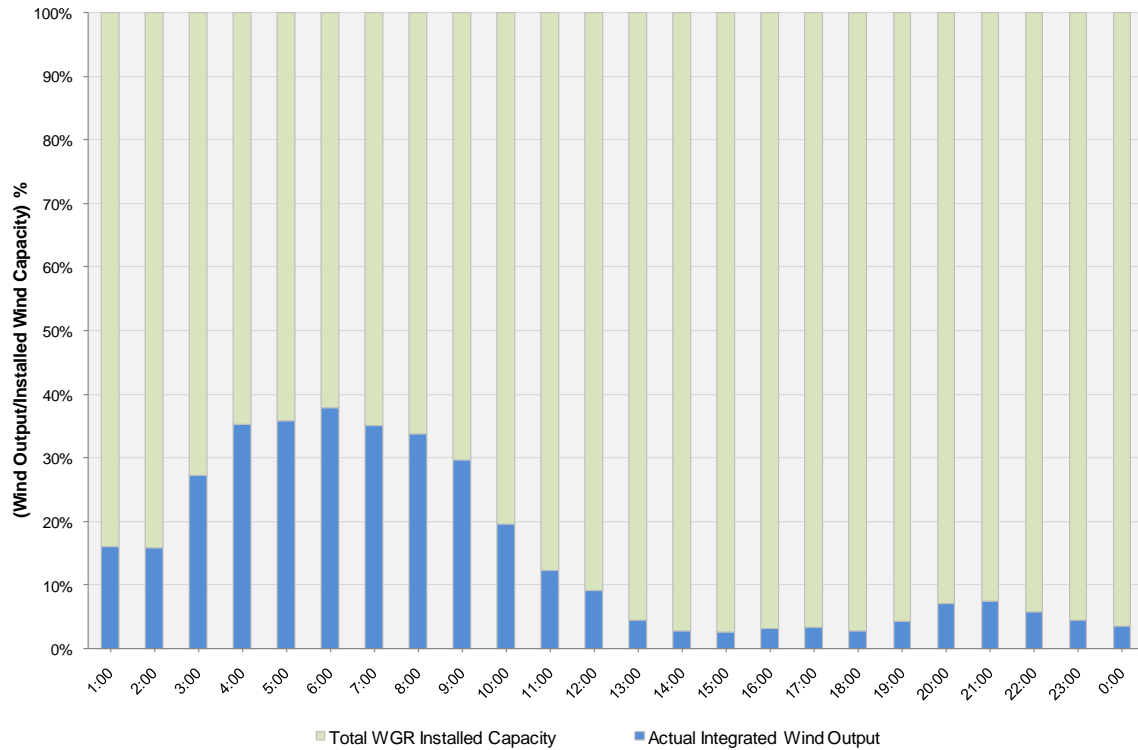
## ERCOT Grid Operations Wind Integration Report: 01/26/11

Peak Load	<b>45,615 MW</b>
Load Peak Hour	<b>08</b>
Wind Record 12/11/10	<b>7,227 MW</b>
Max Wind Value	<b>3,663 MW</b>
Wind Peak Hour	<b>05:38:00</b>
Wind Integration %	<b>9.21</b>

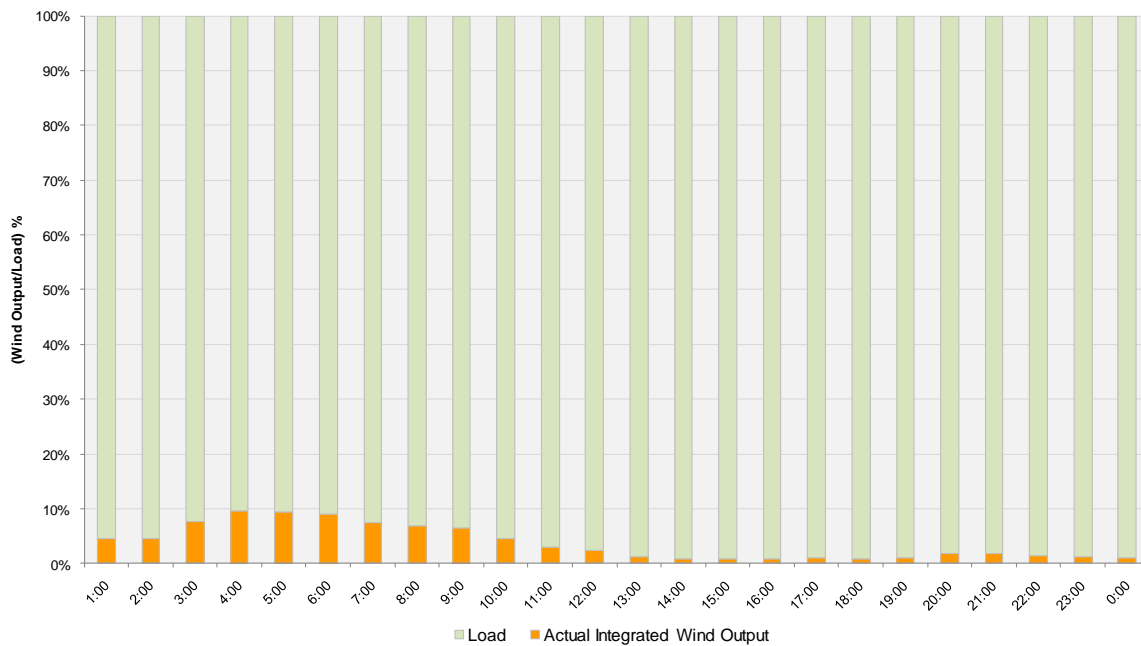
Hourly Average Actual Load vs. Actual Wind Output  
01-26-2011



**Actual Wind Output as a Percentage of the Total Installed Wind Capacity**  
**01-26-2011**



**Actual Wind Output as a Percentage of the ERCOT Load**  
**01-26-2011**



ERCOT Load vs. Actual Wind Output 1/19/2011 - 1/26/2011

